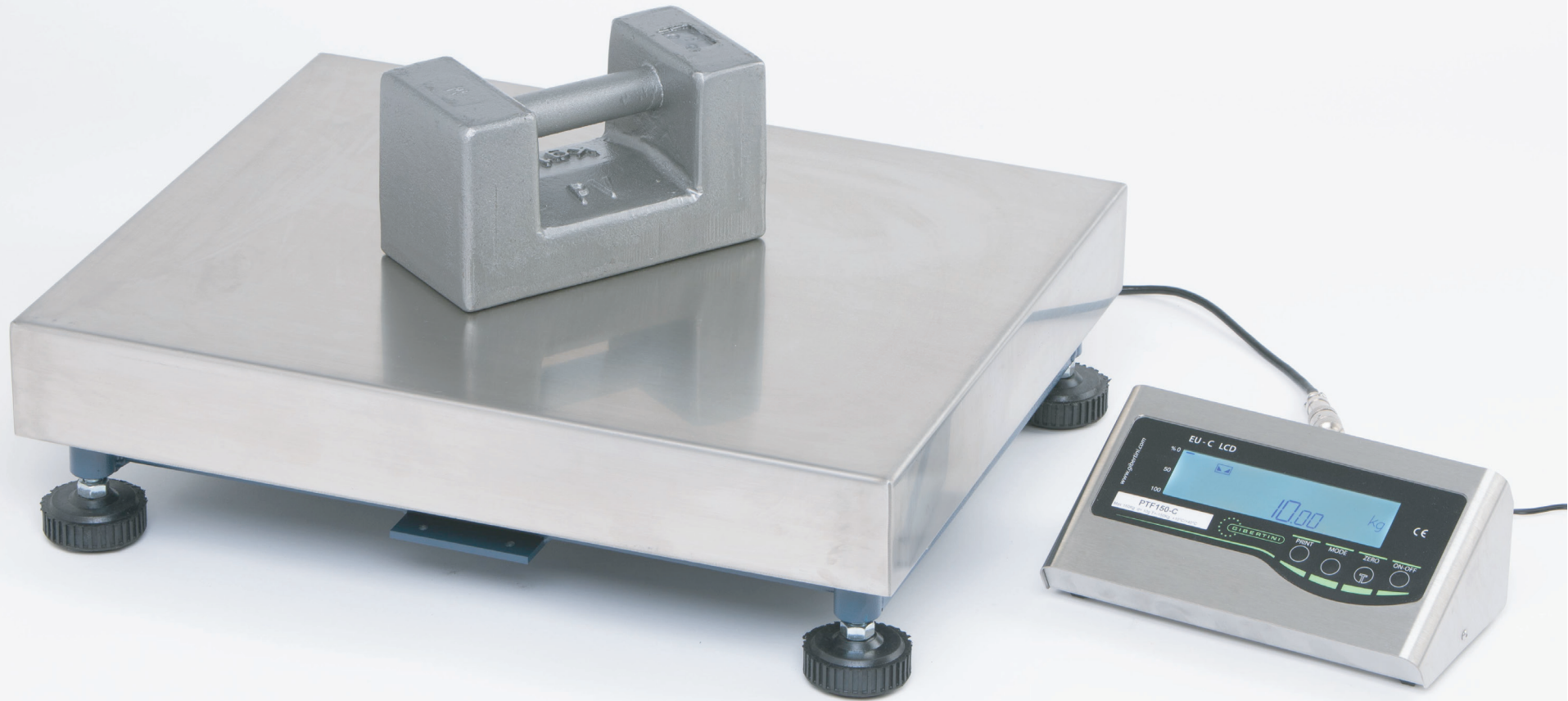


INDUSTRIAL balances

Settore Industriale



DIGITAL PRECISION PLATFORM series **PTF-C**



laboratory electronic balances & oenological equipments

laboratory
balances



industrial
scales



instruments
for paint



oenological
equipments



digital
tensiometer



calibrated
masses



GIBERTINI ELETTRONICA SRL

Via bellini, 37
20026 Novate Milanese
(Milano) - Italy
Tel. (+39) 02 3541434
Fax (+39) 02 3541438
salers@gibertini.com

www.gibertini.com

ISO 9001:2015



LAT N. 094
RMP N.094

Il Centro ACCREDIA LAT n. 094 è accreditato per tarature di bilance e di microdosatori.
Il Centro ACCREDIA RMP n. 094 è accreditato come produttore di materiali di riferimento (soluzioni idroalcoliche).
Per i dettagli consultare le tabelle di accreditamento su www.accredia.it.
ACCREDIA LAT Center n. 094 is accredited for balances and microdosimeters calibration.
ACCREDIA RMP Center n. 094 is accredited as reference material producer (hydroalcoholic solutions).
For details consult the accreditation tables on www.accredia.it.

INDUSTRIAL balances

Settore Industriale



DIGITAL PRECISION PLATFORM

series PTF-C

FUNCTIONS

- Automatic end of range calibration (with external mass supplied on request)
- Operating parameters programmable locally or via USB: reading speed, type of stabilization, functions, etc.
- Easily adaptable to environmental conditions by means of a digital filter selectable by the user
- Bar-graph with display of the full scale percentage used
- Counting of homogeneous pieces, sampling : with 10 pieces and multiples up to 50/100 pieces

MODEL		PTF 36.1-C	PTF 75.2-C	PTF 150.5-C	PTF 300.10-C	PTF 600.20-C
Capacity	Kg	36	75	150	300	600
Readability	g	1	2	5	10	20
Linearity	g	±2	±2	±5	±10	±20
Repeatability	g	±2	±2	±5	±10	±20
Response time		3 ÷ 4 s	3 ÷ 4 s	3 ÷ 4 s	3 ÷ 4 s	3 ÷ 4 s.
Pan dimensions	mm	400x500			800x800	
Warm-up time		> 15 minutes				
Calibration		With external mass (optional)				
		1000 g F1 class or multiples		10 Kg F1 class or multiples		
Operating temperature		+ 10°C / + 40°C				
Data output		USB 2.0 or RS232 I/O (on demand)				
Operating voltage		100÷240 V - 50Hz with external power supply				
Power consumption		< 60 mA				
Rechargeable batteries (optional only BP version)		6 Vdc - Type Ni / MH Autonomy ~12 h - Recharge time: ~12 h				
Standard equipment		Power supply - User manual - CD/pen drive with driver (only USB version)				

TECHNICAL SPECIFICATIONS

- Waterproof and acid resistant membrane keyboard and easy to use 7 segments display
- Stainless steel weighing plate
- Metallic body with epoxide protection
- Adjustable feet for leveling
- Data output: I/O USB adjustable
- Operating temperature: 10° ÷ 40°C
- Power supply: 220 VAC (-15% / +10%)

ON REQUEST

- RS232 data output
- Power supply with rechargeable battery
- Floor or attached column for digital indicator
- Calibration masses, weighing containers and special executions.

Subject to technical changes without notice.

All our instruments are to be used exclusively for scientific purpose and/or for internal control only. They must not be used in environments with danger of explosions.

The use of our balances is forbidden in the cases provided by art. 1, point 2, letter a) of directive 2014/31/UE except for those models approved with CE mark (legal metrology).

Electronic balances are sensible to the variation of the acceleration of gravity. They must be calibrated on the working site (2014/31/UE).

All our instruments comply with directive 2004/108 UE (electromagnetic compatibility).

March 2021

laboratory
balances



industrial
scales



instruments
for paint



oenological
equipments



digital
tensiometer



calibrated
masses



customer care

info@gibertini.com
Tel. (+39) 02 3541434

GIBERTINI ELETTRONICA SRL

Via Bellini, 37
20026 Novate Milanese
(Milano) - Italy
Tel. (+39) 02 3541434
Fax (+39) 02 3541438
sales@gibertini.com

www.gibertini.com

ISO 9001:2015



LAT N. 094
RMP N.094

Il Centro ACCREDIA LAT n. 094 è accreditato per tarature di bilance e di microdosatori.
Il Centro ACCREDIA RMP n. 094 è accreditato come produttore di materiali di riferimento (soluzioni idroalcoliche).
Per i dettagli consultare le tabelle di accreditamento su www.accredia.it.

ACCREDIA LAT Center n. 094 is accredited for balances and microdosimeters calibration.
ACCREDIA RMP Center n. 094 is accredited as reference material producer (hydroalcoholic solutions).
For details consult the accreditation tables on www.accredia.it.